

MULDOON RESERVE PROPOSED PAVILION 14.02.14

There are a number of key objectives of this proposed pavilion and associated elements:

To provide a welcoming place for residents and visitors to relax in a sheltered environment with potential barbecuing facilities.

To create an area where the Bendigo Mountain Bike Club can host a variety of events associated with the adjacent trail network.

To create a visible and prominent trail head for the adjacent trail network.

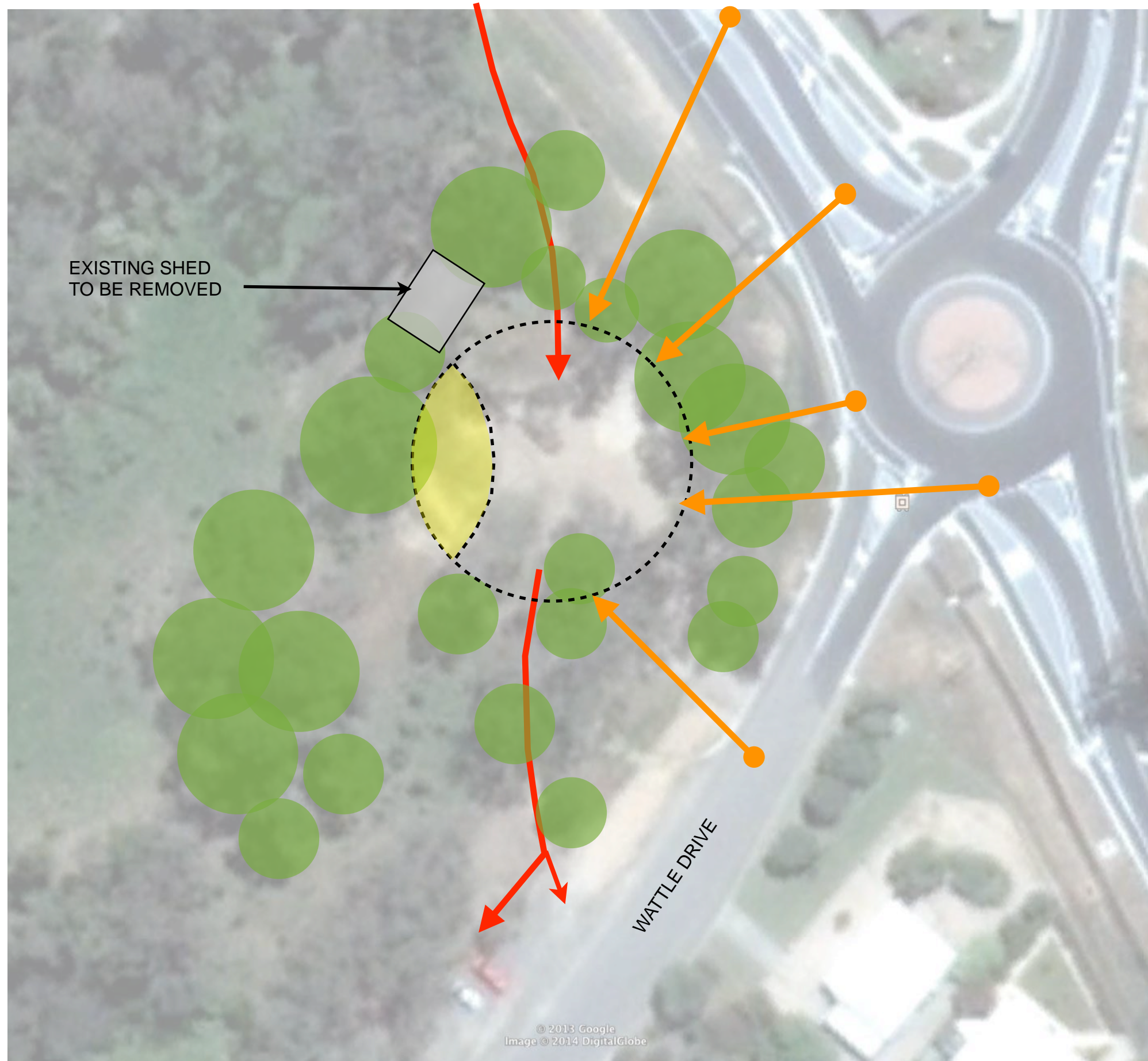
To provide a storage facility for tools and equipment required to maintain the adjacent trail network.

This does not mean that the building wont be sympathetic to its vegetated surroundings.

In creating a space for the staging of events and to give the pavilion a greater connection to the site, the circle is a reinforcement of the loosely defined open space that already exists on site. The pavilion becomes a small segment of the circle reinforcing the alignment of the existing track through the open area and works well in providing a focal point at larger events.

The orange arrows indicate the important views into the site from the surrounding road network and the red arrows show the line of the existing track through the site.

The black dashed lines indicate the location of the new formalised circle event area and the new pavilion is indicated in yellow.



SITE PLAN

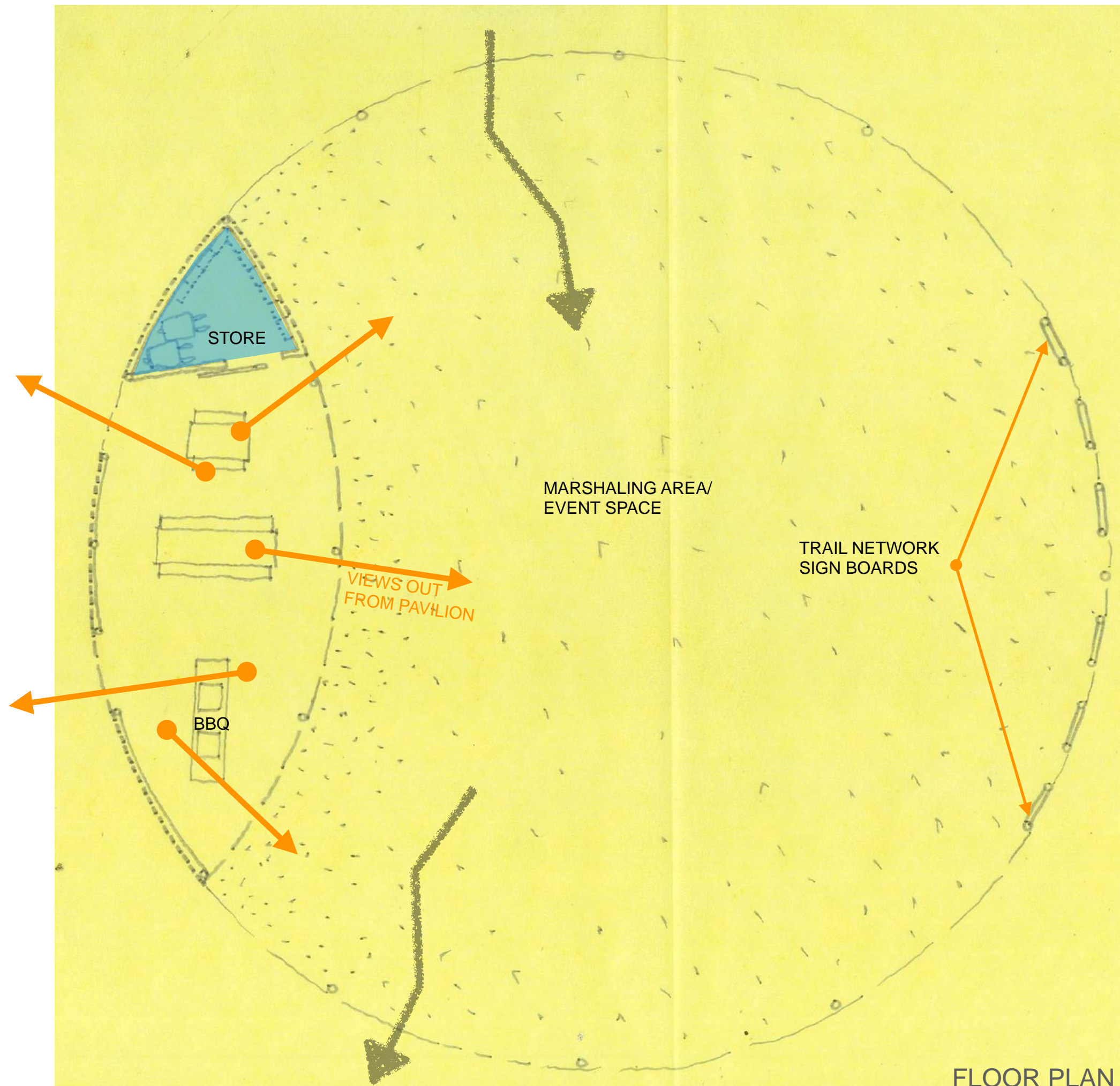
MULDOON RESERVE PROPOSED PAVILION 14.02.14

There are 3 main elements to this proposal.

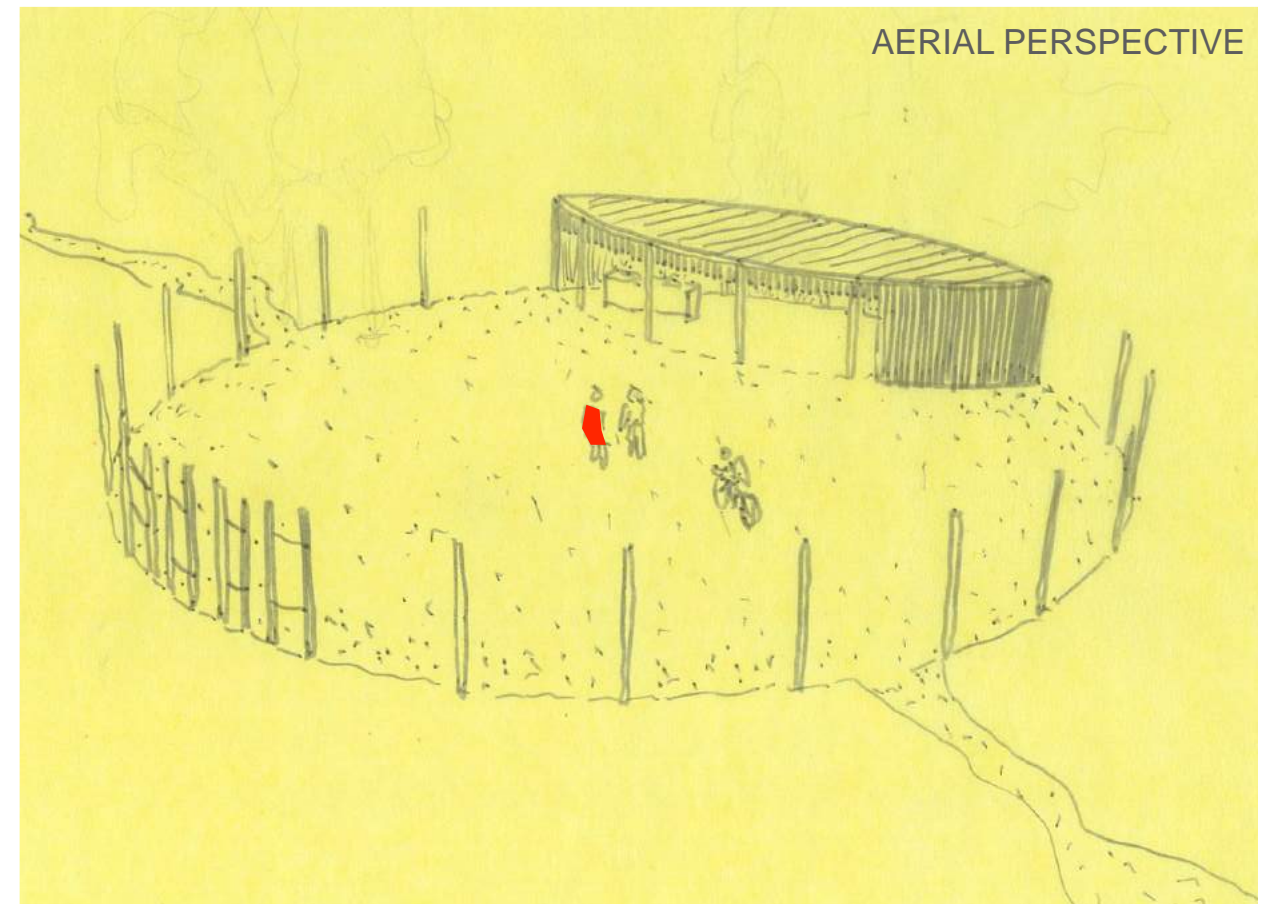
1. Circle of granitic sand with columns spaced to further define its extent and to provide a level of spatial enclosure.
2. Pavilion to provide picnic and bbq facilities in addition to storage for the Bendigo Mountain Bike Club's trail maintenance tools.
3. Trail network signage fixed to columns on the opposite side of the circle to the pavilion.

There is intentionally flexibility in the proposed design so that the layout can be fine tuned to provide adequate storage for the BMBC, provide the appropriate sized event space and to respond to localised site conditions.

These will need to be developed into a final design with the City of Greater Bendigo, the Reserve Management Committee and the Bendigo Mountain Bike Club.

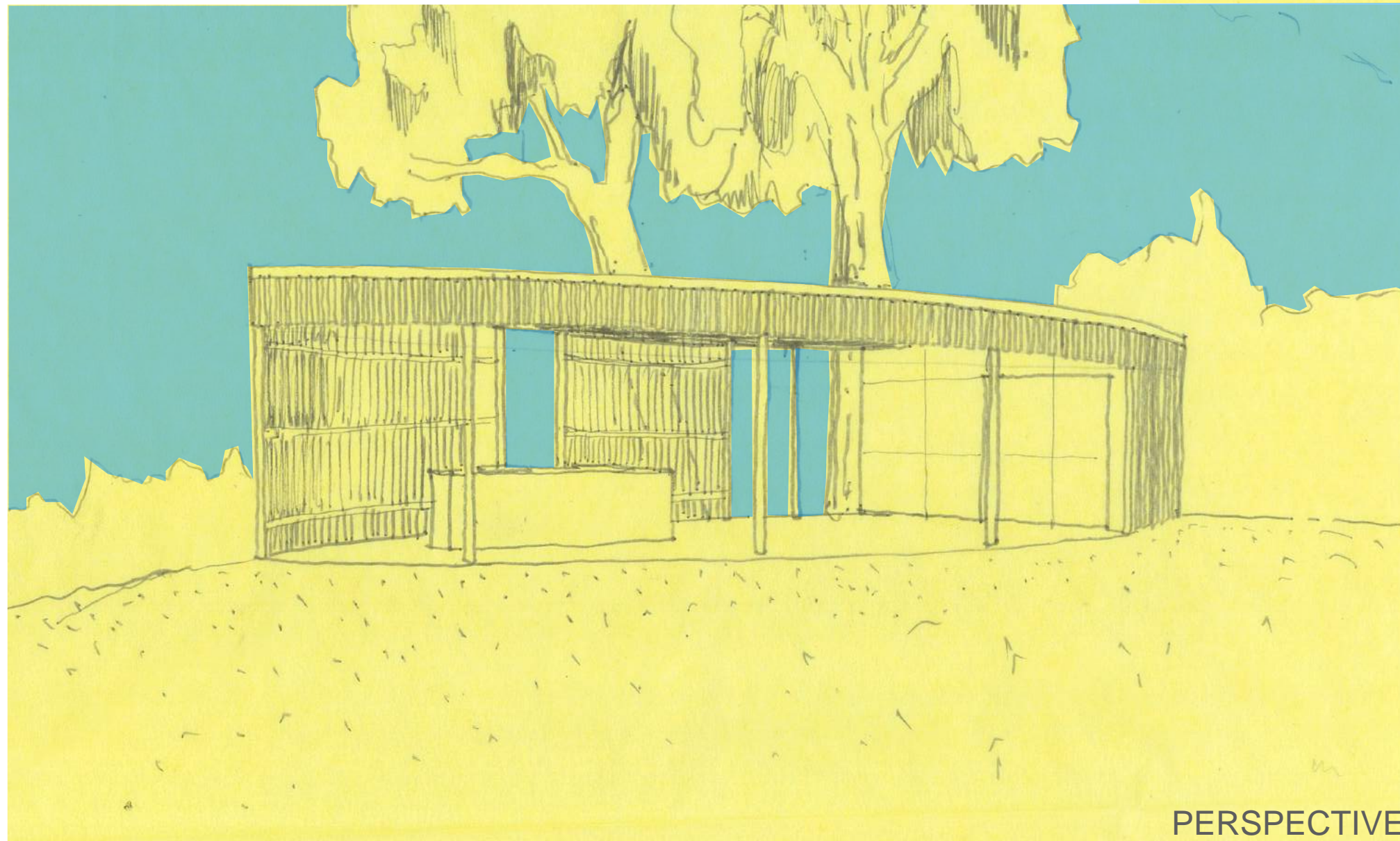


AERIAL PERSPECTIVE



MULDOON RESERVE PROPOSED PAVILION 14.02.14

The pavilion uses a combination of a steel structural frame with timber battens and a metal sheet roof to provide enclosed and screened spaces within.



PERSPECTIVE